



Series S

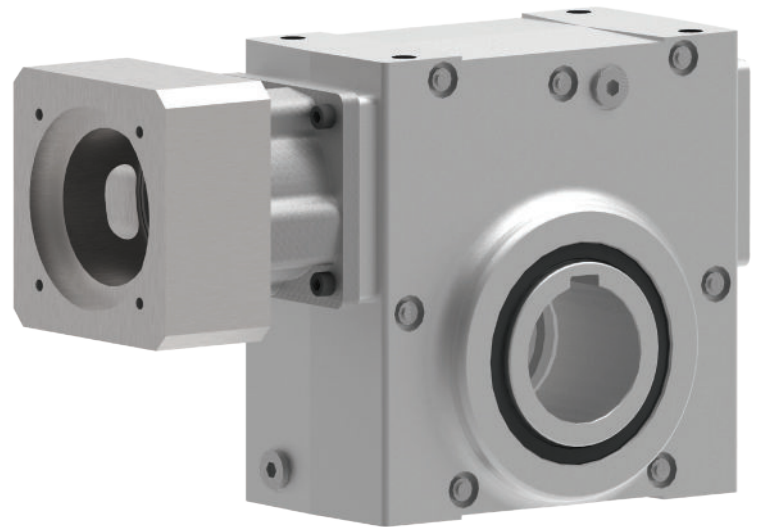
The Series S gearbox is highly a flexible and economical servo reducer. Directly interchangeable with the competition, the Series S features a lightweight, aluminum housing which provides improved thermal performance. No other gearboxes offer the flexibility, performance, and reliability that you have come to expect from Cone Drive.

PACKAGING | AUTOMATION & ROBOTICS | CONVEYOR | SATELLITE COMMUNICATION

MADE IN
USA

ADAPTABLE PRECISION

- Conex proprietary worm gearing supported with two input bearings
- Lightweight, aluminum construction
- USDA white epoxy paint available
- Optional washdown design
- Best in class lead times
- 2 year warranty



CONFIGURE & DOWNLOAD YOUR MODEL AT www.ConeTools.com

SERIES S

S P E C I F I C A T I O N S

Center Distance: 1.33 thru 3.54 in

Ratio: 5:1 thru 60:1

Nominal Backlash: 12 - 41 arcmin

Output Torque_{ConstantSpeed} : $\leq 6,370$ lb-in

Output Torque_{Acceleration} : $\leq 7,540$ lb-in


Input Shaft: Solid, single extended




Output Shaft: Inch or metric, solid (single or double extended), hollow

Lubricant: Factory filled with synthetic lubricant

I.P. Rating: IP 55



 Cone Drive Operations, Inc.
240 East 12th Street
Traverse City, MI 49684, USA

 +1.888.994.2663
 orders@conedrive.com
 conedrive.com



03232022